

E A S T W E S T
L I B R A R I E S

H O L L Y W O O D F A N T A S Y O R C H E S T R A



GETTING  STARTED

CONTENTS

WELCOME TO HOLLYWOOD FANTASY ORCHESTRA

A COLLECTION FOR THE AGES
CREATE CINEMATIC FANTASY WORLDS

POWERED BY THE REVOLUTIONARY OPUS SOFTWARE

CONTROLS AND FEATURES
AREAS OF THE USER INTERFACE
LOADING AN INSTRUMENT

INTRODUCING HOLLYWOOD FANTASY ORCHESTRATOR

ARRANGING AND SEQUENCING
HUNDREDS OF INSPIRING PRESETS
NEW VOICES INSTRUMENT SECTION
AREAS OF THE USER INTERFACE
LOADING THE ORCHESTRATOR
LOADING ORCHESTRATOR PRESETS
CREATING ORCHESTRATOR PRESETS
SAVING ORCHESTRATOR PRESETS
EXPORTING ORCHESTRATOR MIDI

VISIT OUR SUPPORT CENTER

LIVE CHAT WITH A SUPPORT REP
VIDEO TUTORIALS AND MORE
MANUALS AND GUIDES

WELCOME TO HOLLYWOOD FANTASY ORCHESTRA

Introducing Hollywood Fantasy Orchestra, a brand-new orchestra that includes everything you need to create fantasy film, television, and game soundtracks. Produced by sound titan Doug Rogers and Two Steps from Hell producer Nick Phoenix.



Hollywood Fantasy Orchestra includes unique ensembles of world instruments that have been featured in the biggest movies and games in history, and feature modern octave-doubled string sections that perfectly compliment the Hollywood Orchestra series. All this with full stereo imaging mic placement, and all the features that come with EastWest’s powerful Opus sample engine software.



A COLLECTION FOR THE AGES

The Hollywood Fantasy Orchestra series is made up of 5 libraries: Strings, Brass, Winds, Percussion, and Voices. It also includes the Hollywood Fantasy Orchestrator scoring engine that we developed in collaboration with Sonuscore.

Click the links below to watch walkthrough videos for each library in the series, and the Orchestrator scoring engine.

- [HOLLYWOOD FANTASY STRINGS](#)
- [HOLLYWOOD FANTASY BRASS](#)
- [HOLLYWOOD FANTASY WINDS](#)
- [HOLLYWOOD FANTASY PERCUSSION](#)
- [HOLLYWOOD FANTASY VOICES](#)
- [HOLLYWOOD FANTASY ORCHESTRATOR](#)

CREATE CINEMATIC FANTASY WORLDS

If you're scoring the next big fantasy epic or medieval tale, adding in a few period solo instruments won't cut it. To bridge the gap between orchestral and world instruments, every instrument needs to earn its place in the mix to create a massive cinematic sound. For that we created an entirely new orchestra that puts all the period instruments you need on the same sound stage.

- **EASTWEST STUDIOS** Instruments were recorded in the same studio, and with the same microphone configurations as the Hollywood Orchestra series, giving the entire ensemble a truly cinematic feel.
- **MICROPHONE MIXES** Individual control over the level and pan of each of the four microphone mixes that includes close, mid, main, and surround, gives you full control over the dimension of the sound.
- **COMMAND THE MOOD** Each instrument is programmed with 3 moods, from natural (Classic), to intimate (Soft), or cinematic (Epic). Simply select a mood to instantly change a group of settings that include microphone mix, reverb, scripts, and MIDI compressor parameters. You can rotate through these different moods to match the fantasy orchestra sound you're looking for.
- **ENSEMBLE POWER** Most of the instruments are recorded in small ensembles, lending them a grandeur that isn't possible with solo instruments. Strings feature hardanger fiddles, lutes, viola da gambas, mountain dulcimers, hurdy gurdies, and octave-doubled string sections. Brass features alpenhorns, flugelhorns, Wagner tubas, and a low brass section. Winds feature ocarinas, uilleann pipes, renaissance flutes, and irish whistles.

CONTINUE READING: This guide is a primer for the Hollywood Fantasy Orchestra series. Please see the [Hollywood Fantasy Orchestra User Manual](#) for a more comprehensive dive into all its controls and features.

POWERED BY THE REVOLUTIONARY OPUS SOFTWARE

Opus is the revolutionary software engine that powers all EastWest virtual instruments. It is faster, more powerful, more flexible, and better looking than the previous generation software engine, and it comes with some incredible new features.

EASTWEST SOUNDS VIDEO: [OPUS SOFTWARE WALKTHROUGH VIDEO](#)

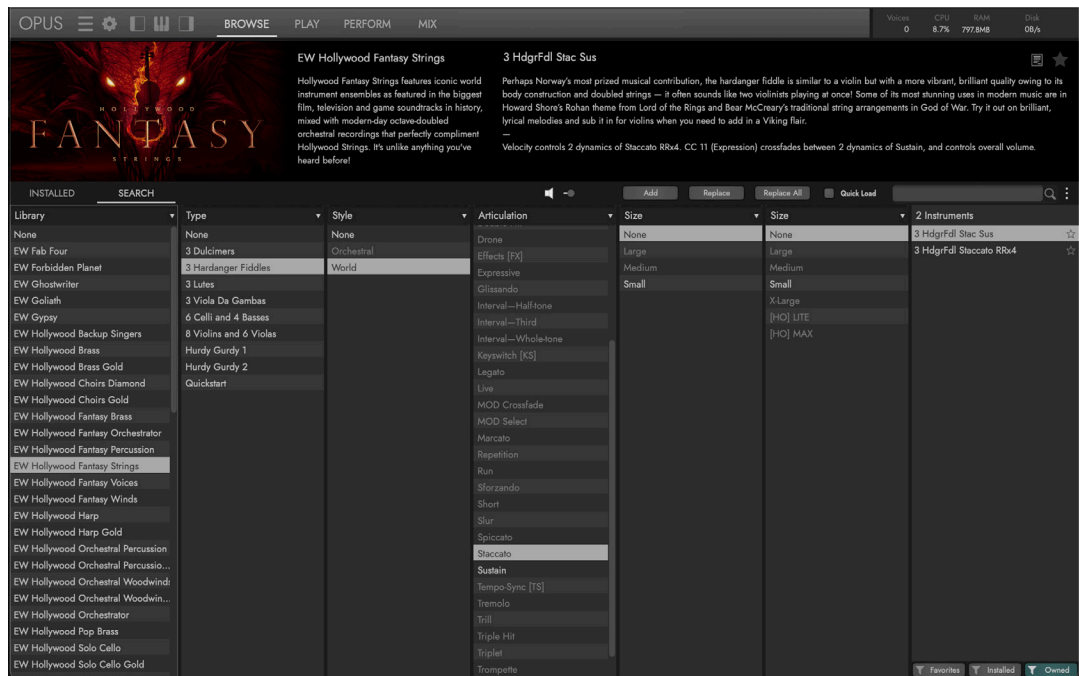


CONTROLS AND FEATURES

Below is a brief list of some of the main features of the Opus software engine. Refer to the Opus Software Manual for more in-depth coverage of all the powerful controls and features available in Opus.

- **FAST AND EFFICIENT PERFORMANCE** was a top priority as Opus was being developed from the ground up. With an emphasis on achieving the most efficient use of computer resources possible, it is the fastest sample engine on the market. Opus runs natively on Apple's new M1 processors, and Intel-based Macs, and is compatible with the latest Mac and Windows operating systems.
- **HIGH RESOLUTION USER INTERFACE** are now available for all EastWest product's in Opus. The high resolution (retina) user interfaces are also scalable to any size, providing ultimate flexibility when used with high-resolution computer monitors.

- **A POWERFUL SCRIPTING LANGUAGE** is an essential part of overall instrument design. It is used to model instrument behavior, implement sonic features not possible to achieve otherwise, and define user interaction. Opus features a brand new, powerful script language called OpusScript developed by Wolfgang Schneider, the creator of Kontakt. It empowers sound designers to express their ideas, and deploy actual functionality and behavior beyond what the underlying software contains.
- **INSTRUMENT DOWNLOADS** mean you no longer have to wait hours for large libraries to download. Now instruments can be downloaded individually at the speed of your internet connection. With Audio Previews you can audition a sound, download it, and be playing in minutes!



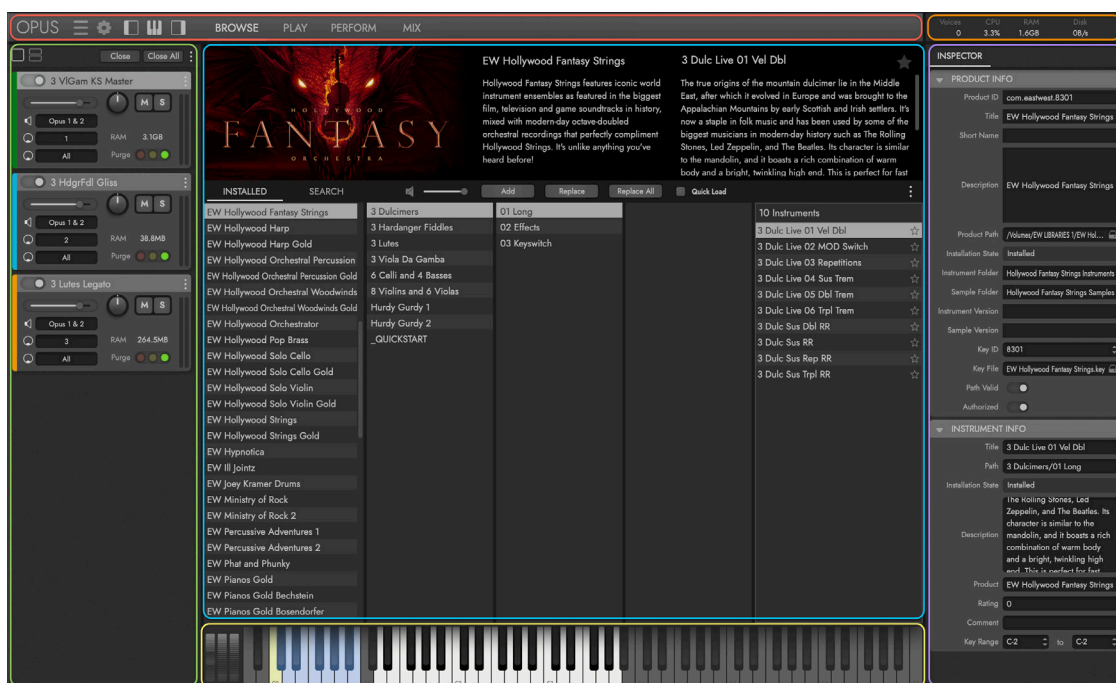
- **CUSTOMIZABLE KEYSWITCHES** allows users to build their own keyswitch instruments, and the ability to create multi-articulation instruments with a variety of options to switch between articulations on the fly. Trigger Options include Keyswitches, Continuous Controllers (CCs), Velocity, Program Changes, and more!
- **ADVANCED AUTOMATION** options come pre-configured on a per-instrument basis, with custom settings tailored to that instrument or library's unique features. Users are also free to configure their own automation settings by adding automation parameters and macro parameters, the latter of which controls multiple targets with a single macro. Existing MIDI Controller Mapping assignments can also be re-mapped to any freely available MIDI CC assignment you like.
- **MULTI-INSTRUMENT SETUPS** are easier than ever to manage thanks to a dedicated area of the user interface that handles these 'Performances'. Use an array of controls and options that allow you to customize how multiple instrument interact with each other, including defining octaves, key ranges, trigger actions, and more.

AREAS OF THE USER INTERFACE

The Opus user interface is divided into 6 main areas (some initially hidden from view).

At the top is the **NAVIGATION BAR AREA** that contains important menus and buttons to access all the main areas of the Opus user interface. From left to right that includes:

- The **OPUS BUTTON** prompts an ‘About’ window to appear with software information.
- The **MAIN MENU OPTIONS** (horizontal lines) are related to saving and opening instruments and performances, and the **SETTINGS MENU OPTIONS** (gear icon) contain preferences for audio and MIDI, and more.
- The **INTERFACE TOGGLES** show and hide parts of the Opus user interface: the Instrument Rack (left), the Virtual Keyboard (middle), and the Inspector (right).
- The **PAGE SELECTORS** switch the **MAIN DISPLAY AREA** between the Browse (shown), Play, Perform, and Mix pages.



The **INSTRUMENT RACK AREA** populates with loaded instruments, and includes basic controls for volume, pan, solo / mute, and more. Further details are contained in the section below.

The **VIRTUAL KEYBOARD AREA** shows the selected instrument’s sampled key range, pitch wheel, modulation wheel (CC 1), and expression wheel (CC 11).

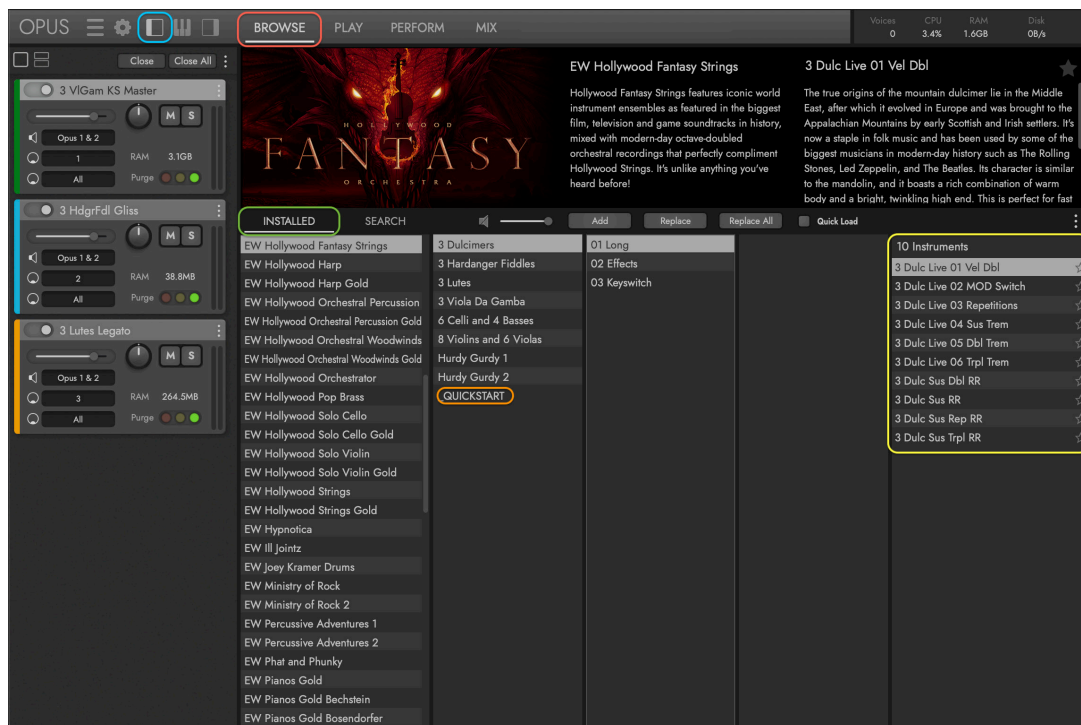
The **SYSTEM USAGE AREA** area provides real-time stats related to the number of simultaneous voices, CPU usage, RAM usage and disk usage.

The **INSPECTOR AREA** shows information pertaining to the current selection, whether that’s an instrument selected in the Browse page, or a channel selected in the Mix page.

LOADING AN INSTRUMENT

The Browse page is where instruments can be searched for, auditioned and loaded.

1. Click the **BROWSE PAGE SELECTOR** in the **NAVIGATION BAR** to enter the Browse page.
2. Click the **INSTRUMENT RACK BUTTON** in the **NAVIGATION BAR** to see the Instrument Rack, where loaded instruments populate with controls like volume, pan, and more.
3. Click the **INSTALLED MODE BUTTON**, then click on Hollywood Fantasy Strings in the list of installed libraries that appear in the left column. Search through its sub-categories until a folder containing instruments is clicked on.



4. Click on the **QUICKSTART FOLDER** to access producer choice instruments ideal for getting ideas started fast!
5. Instruments will appear in the **RESULTS LIST COLUMN**, where you can double-click on one to load it, and double-click another one to replace it. Hold the [option/alt] key while you double-click to add an instrument, instead of replacing it.

INTRODUCING HOLLYWOOD FANTASY ORCHESTRATOR

Create music in the style of Hollywood’s greatest fantasy film, television, and game soundtracks in seconds by playing a few simple chords with one hand and shaping expression with the other.

EASTWEST SOUNDS VIDEO: [HOLLYWOOD FANTASY ORCHESTRATOR WALKTHROUGH](#)



ARRANGING AND SEQUENCING

At the heart of the Hollywood Fantasy Orchestrator is our innovative Scoring Engine, developed in collaboration with Sonuscore, which produces everything from basic string arrangements to very complex orchestrations based on your MIDI input.

It achieves this in a two-step process by first modifying the MIDI input with a Note Selection process, then sending those note selections to a powerful Step Sequencer where chords are played with programmed rhythms. To take things a step further, you can optionally activate our step sequencers. Each slot has one of them. They take whatever the note selection process outputs, and manipulates that. If you program a rhythmic pattern into the sequencers and play a C-Major chord, the sequencers will take the notes from the note selection and play the chord with that rhythm.

HUNDREDS OF INSPIRING PRESETS

Hollywood Fantasy Orchestrator brings the iconic world and modern-day orchestral instruments in the Hollywood Fantasy Orchestra series to life with hundreds of customizable presets across 4 categories. Use the presets as they are, alter them by changing the melodic pattern in the step sequencers, or create entirely new ones.

These presets are the perfect tool both for new composers who want to get that magical fantasy sound quickly and effortlessly, and for professional composers who need to produce large amounts of compositions on a deadline.

- **ENSEMBLE** allows you to quickly create rich orchestral arrangements with presets that combine instruments into various strings, brass, winds, percussion, and full orchestra ensembles. For instance, loading the ‘Strings And Brass - Legato’ preset in the Strings and Brass Long sub-category will instantly load a string and brass ensemble consisting of 3 Flugelhorns, 3 Alpenhorns, 3 Wagner Tubas, 6 Low Brass, 3 Hardanger Fiddles, High Octave Strings, 3 Viola Da Gambas, and Low Octave Strings.
- **OSTINATO** enables you to build rhythmic tension in different meters or create moving melodic lines by only changing a few notes. Start by exploring the sub-categories that contain different note durations (quarter notes, eighth notes, sixteenth notes, etc), then choose from one of the many preset variations, including those in different time signatures (3/4, 5/4, 7/8, and more).
- **SCORE** brings classic Hollywood fantasy orchestrations to life, bringing an endless source of inspiration to your compositions. Choose between a wide selection of themes in the sub-categories, each with lots of different variations, including alternative time signatures.
- **USER** is where your own presets can be stored by modifying existing presets or by building your own ensembles from scratch!

NEW VOICES INSTRUMENT SECTION

Hollywood Fantasy Orchestrator adds an additional Voices instrument section alongside the existing strings, brass, winds, percussion, and voices. Put the power of singer Merethe Soltvedt’s majestic voice at your fingertips, and add a full men and women’s choir to provide a rich, ethereal palette that perfectly underscores the most powerful moments of your fantasy scores.

PLEASE NOTE: Hollywood Fantasy Orchestrator uses instruments from all 5 parts of the Hollywood Fantasy Orchestra series, and is not a standalone product. It requires either perpetual product licenses for each of the libraries, an Fantasy Orchestrator bundle license, or a ComposerCloud+ subscription license. Hollywood Fantasy Orchestrator is a separate product from the Hollywood Orchestrator product. They share many features, but only work with their respective library collections.

AREAS OF THE USER INTERFACE

Hollywood Fantasy Orchestrator’s user interface will automatically appear in the Perform page with the Hollywood Fantasy Orchestrator sub-page selected by default when its special performance file is loaded from the Browse page (see ‘Loading the Orchestrator’ article in the Walkthrough section that follows).

There are several different views, accessible by buttons that appear at the top of the Hollywood Fantasy Orchestrator user interface.

- **MAIN VIEW BUTTON** is where the Instrument Panels within each section are found and their Arranger Mode assigned, which controls how they behave when MIDI input is received. This area also contains basic controls like volume, and access to the Step Sequencer, where advanced tools are available to edit sequences.
- **MIXER VIEW BUTTON** contains a Mixer Channel for each loaded instrument, each with a variety of controls for shaping the sound, including global equalizer and reverb effects.

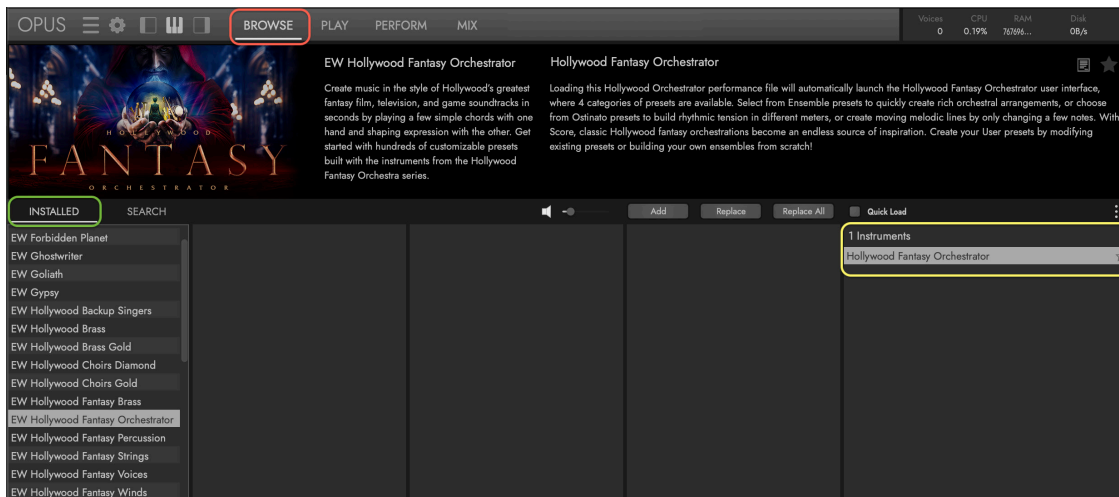


- **PRESETS BUTTON** will open the Preset Browser where presets can be loaded from. Once loaded, the preset name appears in the display. The up and down arrows can be used to advance to the next preset, or go back to a previous one.
- **GLOBAL TEMPO CONTROL** can be set manually in stand-alone mode, and is automatically synced to the DAW tempo when used as a plug-in. We generally recommend not straying too far from the original tempo in either scenario.
- **INSTRUMENT SECTION SELECTORS** switches between the 5 instrument sections (Winds, Brass, Percussion, Strings, and Voices) while in the Main and Mixer views.
- **INSTRUMENT SECTION MUTE KEYS** appear in the lower end of the virtual keyboard in colors that correspond to their respective Instrument Sections. Use them to toggle each Instrument Section's respective Mute control: Winds (C0), Brass (D0), Percussion (E0), Strings (F0), and Voices (G0). This enables you to audition the preset with any combination of instrument sections you like.
- **GLOBAL BYPASS CONTROL** will bypass the sequencer in each Instrument Slot, while still controlling the note selection based on the Arranger Mode selection.
- **REC BUTTON** allows you to click on this button and drag the performance from the last played MIDI input from the Orchestrator to your DAW. For details, see the 'Exporting Orchestrator MIDI' article in the Walkthrough section that follows.

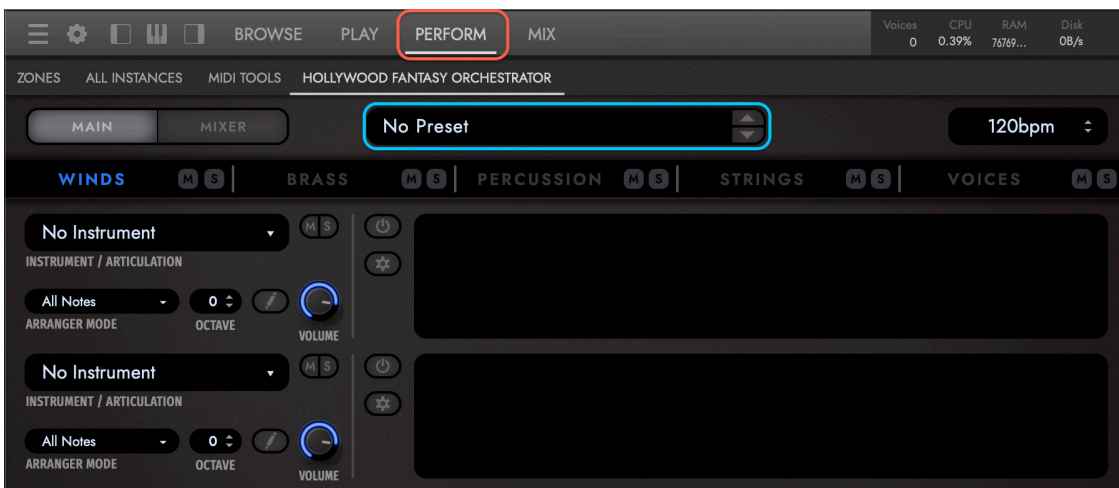
LOADING THE ORCHESTRATOR

The Hollywood Fantasy Orchestrator scoring engine will launch when its special performance file is loaded in the Browse page.

1. Click the **BROWSE PAGE SELECTOR** in the **NAVIGATION BAR** to enter the Browse page.
2. In the **INSTALLED MODE** column, click on 'EW Hollywood Fantasy Orchestrator' in the list.
3. In the **RESULTS LIST COLUMN**, double-click on the 'Hollywood Fantasy Orchestrator' performance file to load it.



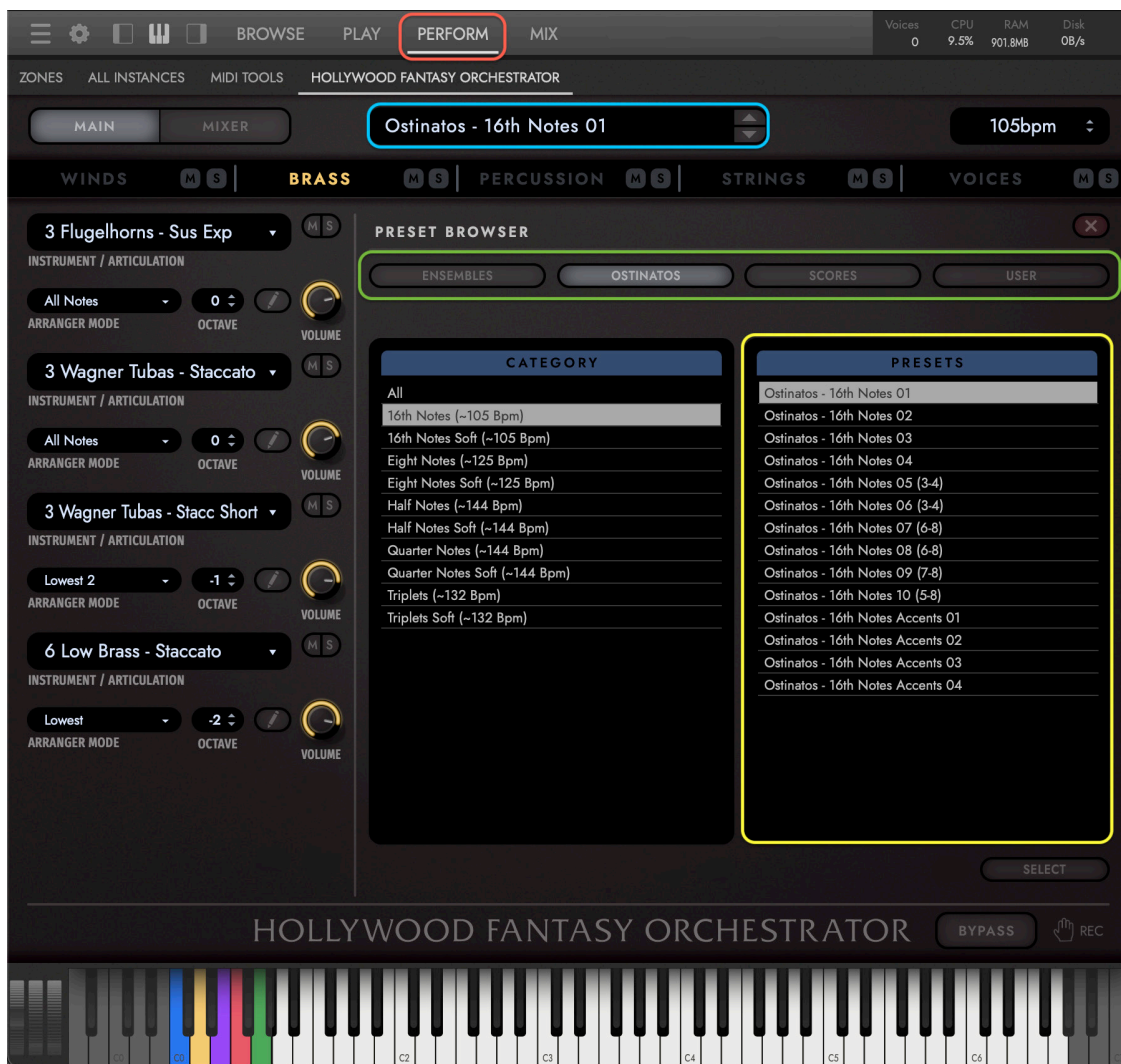
When the user interface initially loads into the **PERFORM PAGE** of the **NAVIGATION BAR**, 'No Preset' is shown in the **PRESET SELECTOR**, and nothing is loaded. Continue reading the next section for steps to load a preset file.



LOADING ORCHESTRATOR PRESETS

The Hollywood Fantasy Orchestrator appears automatically in the **PERFORM PAGE** in the **NAVIGATION BAR** once its performance file is loaded (see previous section).

1. Click the **PRESET SELECTOR** to enter the **PRESET BROWSER AREA**.
2. Click on one of the **PRESET BUTTONS** (Ensembles, Ostinatos, Scores, and User) to view its contents in the area below.
3. Make a selection in the 'Category' list to populate the 'Presets' list with its contents. Double-click on a **PRESET FILE** to load it.

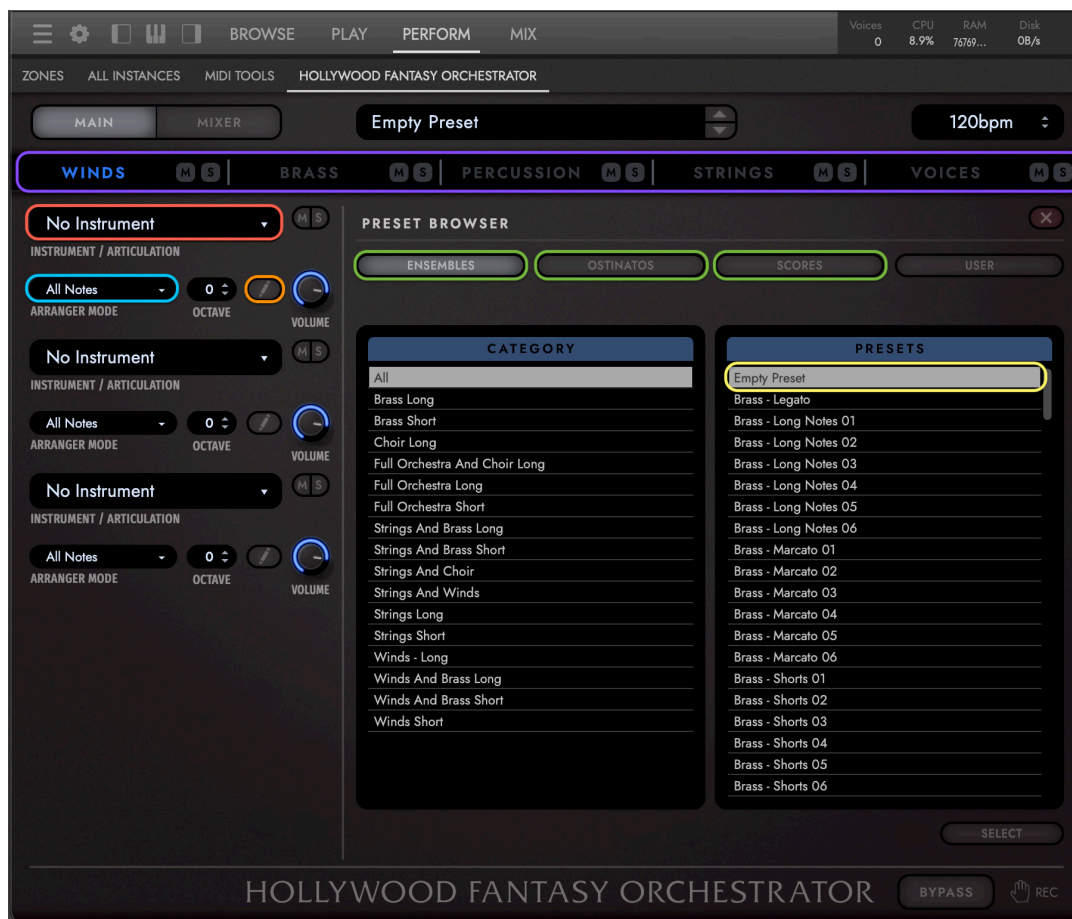


PLEASE NOTE: A single orchestrator preset loads a performance (multi-instrument). For this reason, only a single preset can be loaded at a time. Simply double-click to load another preset, which will overwrite the existing one.

CREATING ORCHESTRATOR PRESETS

To create your own Orchestrator preset an 'Empty Preset' file must first be loaded.

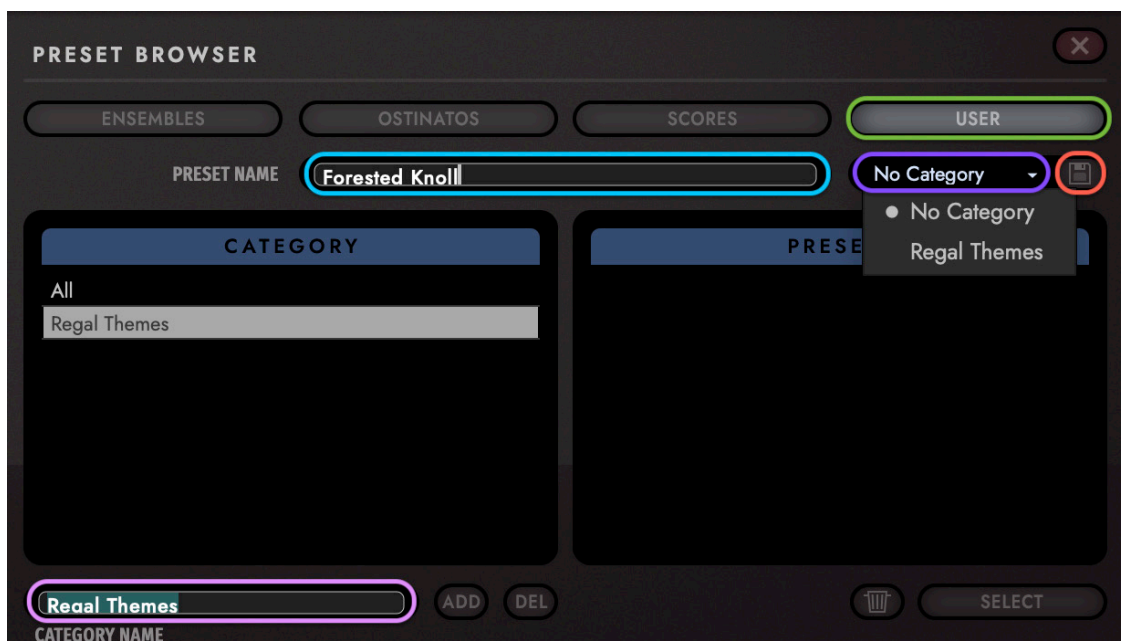
1. Click on one of the **PRESET BUTTONS** (Ensemble, Ostinatos, or Scores) to view its contexts in the area below.
2. The default selection in each of the preset categories is set to 'All', which will show the **PRESET FILE** named 'Empty Preset' at the top of the 'Preset' list. Double-click this preset to load it.
3. Click the **INSTRUMENT SECTION SELECTORS** along the top to go between the Winds, Brass, Percussion, Strings, and Voices sections.
4. Click in the **INSTRUMENT / ARTICULATION SLOTS** and load an instrument articulation.



5. Click in the **ARRANGER MODE MENU** and select a mode to determine how the note selection process for that instrument will be handled.
6. Click the **STEP SEQUENCER BUTTON** to open an editor where each instrument can be programmed with its own Step Sequencer pattern.

SAVING ORCHESTRATOR PRESETS

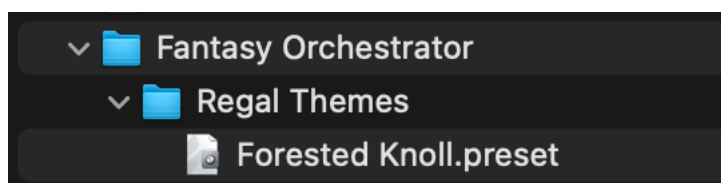
To save changes you’ve made to an existing preset, or to save one of your own, follow the instructions below to add a new category and save the preset to it.



1. Click on the **USER PRESETS BUTTON** to show them in the Preset Browser.
2. Click inside the **CATEGORY NAME FIELD** in the lower-left of the Presets Browser and enter a name for the category. Next, click the “Add” button to add a new category.
3. Click in the **PRESET NAME FIELD** and enter a name for the preset.
4. If you wish to add the preset to a specific category (like the one you just created), click in the **CATEGORY MENU** and select it from the list.
5. Then click the **SAVE PRESET BUTTON** to the right of the Category menu to save the preset to the specified category.

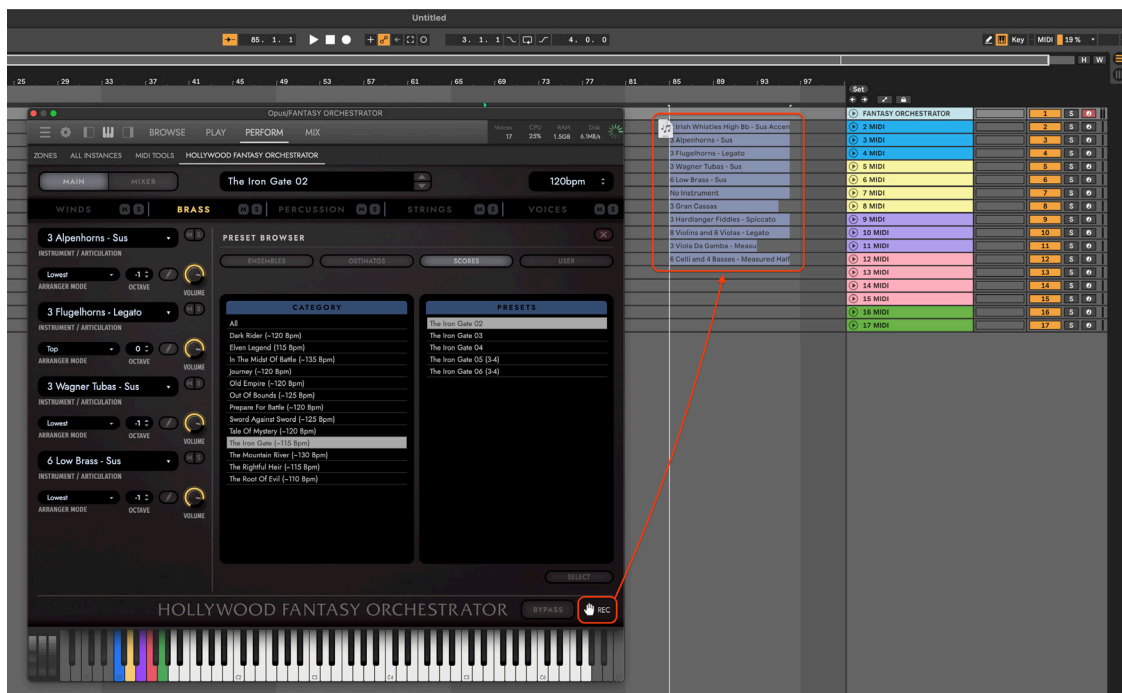
User presets are saved with a [.preset] suffix into the selected category sub-folder, which lives inside the Fantasy Orchestrator folder in the following directory:

- **MacOS:** Mac HD/Users/Username/Documents/East West/Presets/Fantasy Orchestrator/
- **Windows:** C:\Users\Username\Documents\East West\Presets\Fantasy Orchestrator/



EXPORTING ORCHESTRATOR MIDI

MIDI performances from the Orchestrator presets can be exported from the plug-in straight into your preferred DAW. This enables the use of Orchestrator performances with other virtual instruments in your project, allowing you to export the MIDI and assign it to any instruments you wish.



With an Orchestrator preset loaded, play the sequence back with MIDI input until you're finished, then click the **REC BUTTON** to drag the MIDI files from Orchestrator and drop them into your DAW's sequencer, exporting the MIDI into your project.

		FANTASY ORCHESTRATOR			
2	Irish Whistles High Bb - Sus Accent	2 MIDI	1-Opus	1	S
		3 MIDI	2-Opus	2	S
		4 MIDI	3-Opus	3	S
3	Alpenhorns - Sus	5 MIDI	4-Opus	4	S
	3 Flugelhorns - Legato	6 MIDI	5-Opus	5	S
	3 Wagner Tubas - Sus	7 MIDI	6-Opus	6	S
	6 Low Brass - Sus	8 MIDI	7-Opus	7	S
		9 MIDI	8-Opus	8	S
		10 MIDI	9-Opus	9	S
		11 MIDI	10-Opus	10	S
		12 MIDI	11-Opus	11	S
		13 MIDI	12-Opus	12	S
		14 MIDI	13-Opus	13	S
		15 MIDI	14-Opus	14	S
		16 MIDI	15-Opus	15	S
		17 MIDI	16-Opus	16	S
			17-Opus	17	S

PLEASE NOTE: MIDI files are named according to the corresponding Instrument Slot, but if an Instrument Slot has 'No Instrument', no MIDI will be generated.

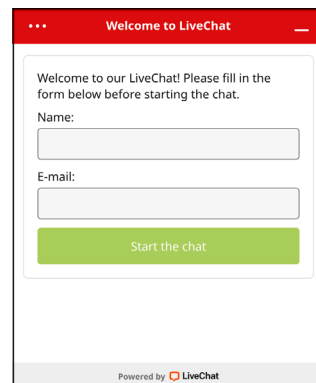
VISIT OUR SUPPORT CENTER

Visit the [EastWest Support Center](#) to talk to a Support Rep through our Live Chat service, get software and product updates, access FAQs, manuals, guides, and more!

LIVE CHAT WITH A SUPPORT REP

EastWest’s Support Center offers Live Chat, the fastest way to reach a Support Team Member to help resolve any technical issues you may be having.

Click on the red “Chat Now” box that appears in the lower-right corner. Fill in your name and email address, then click “Start the Chat”, or if an agent is not available click “Leave a Message” by explaining your issue, and a Support Agent will respond as soon as they’re available.



VIDEO TUTORIALS AND MORE

Visit us on YouTube for video walkthroughs, tutorials, and trailers, and join the discussion and get the latest announcements on Facebook.

- [EastWest Sounds on YouTube](#)
- [EastWest Sounds on Facebook](#)

MANUALS AND GUIDES

The latest manuals for each product are available in the [EastWest Support Center](#), and many are accessible directly inside the Opus Software itself.

- **Library User Manuals** are accessible by clicking on the **USER MANUAL BUTTON** located in the top-right corner of the Description Box, found in the Browse page.



- **Opus Software Manual** is accessible by clicking on the **SETTINGS MENU BUTTON** and in the Navigation Bar, and selecting the **HELP OPTION** at the bottom of the menu. It provides a comprehensive dive into all the features and controls available in Opus.

