

E A S T W E S T
COMPOSER CLOUD+

ON-DEMAND SUBSCRIPTION SERVICE



GETTING  STARTED

1.0.5

CONTENTS

WELCOME TO COMPOSERCLLOUD+

POWERED BY THE REVOLUTIONARY OPUS SOFTWARE ENGINE
OUR INNOVATIVE ORCHESTRATOR SCORING ENGINE

HOW TO INSTALL COMPOSERCLLOUD+

STEP 1: DOWNLOAD AND INSTALL THE INSTALLATION CENTER
STEP 2: DOWNLOAD AND INSTALL THE OPUS SOFTWARE
STEP 3: ACTIVATE THE COMPOSERCLLOUD+ LICENSE
STEP 4: SET THE LIBRARY INSTALLATION PATH
STEP 5: DOWNLOAD INSTRUMENTS OR ENTIRE LIBRARIES

DOWNLOADING INSTRUMENTS

ON-DEMAND DOWNLOADS
DOWNLOADS IN PROGRESS
AUTOMATIC DOWNLOADS
PARTIAL DOWNLOADS
DOWNLOAD PREFERENCES

DOWNLOADING LIBRARIES

THE DOWNLOAD PROCESS
ACTIVATED AND READY FOR USE
UPDATING EASTWEST LIBRARIES

REQUIRED DRIVE SPACE

LIBRARY SIZE TABLE
UPGRADING TO COMPOSERCLLOUD+

VISIT OUR SUPPORT CENTER

LIVE CHAT WITH A SUPPORT REP
VIDEO TUTORIALS AND MORE
MANUALS AND GUIDES

WELCOME TO COMPOSERCLOUD+

ComposerCloud+ is the largest and most detailed virtual instrument collection on the planet, opening the gates to thousands upon thousands of professional-quality instruments. For more, visit the [ComposerCloud+ page](#), or click the video link below.

EASTWEST SOUNDS VIDEO: [COMPOSERCLOUD+ INTRODUCTION](#)

POWERED BY THE REVOLUTIONARY OPUS SOFTWARE ENGINE

Our brand new Opus software engine replaces Play and has been years in development. “Many improvements were made to the Play software engine over the last decade but we suddenly had a unique opportunity,” says producer Doug Rogers, “we were able to bring Wolfgang Kundrus in as head of software development. He was the mastermind behind the creation of Cubase, Nuendo, and Studio One.”

EASTWEST SOUNDS VIDEO: [OPUS SOFTWARE ENGINE WALKTHROUGH](#)



Doug Rogers continues, saying “Then we were able to bring in Wolfgang Schneider, the creator of Kontakt. With these two titans of music software development now on our team, we decided it was time to develop a brand new software engine from the ground up. The Opus software engine is the realization of this effort, and will be the launching pad for many exciting new products in the future.”

The Opus software engine is the realization of this effort. Not only is it faster, more powerful, more flexible, and better looking than Play, it comes with some incredible new features such as individual instrument downloads, customized key-switches, new

effects for the mixer page, scalable retina GUI upgrades for legacy products, a powerful new script language, and many more features that allow you to completely customize the sound of each instrument. It's one of the most exciting developments in the history of our company and will be the launching pad for many exciting new products in the future.

Highlighted below are some of the powerful features of Opus, the software that powers EastWest virtual instruments. For more detailed information, please read the [Opus Software Manual](#) to learn all the controls and features available in Opus.

- **ON DEMAND DOWNLOADS** mean you no longer have to wait hours for large libraries to download. Now instruments can be downloaded individually at the speed of your internet connection. With Audio Previews, audition a sound, download it, and be playing in minutes!
- **FAST AND EFFICIENT PERFORMANCE** was a top priority as Opus was being developed from the ground up. With an emphasis on achieving the most efficient use of computer resources possible, it is the fastest sample engine on the market. Opus runs natively on Apple's new M1 processors, and Intel-based Macs, and is compatible with the latest MacOS Monterey and Microsoft Windows 11 operating systems.
- **HIGH RESOLUTION USER INTERFACES** are now available for all EastWest product's in Opus. The high resolution (retina) user interfaces are also scalable to any size, providing ultimate flexibility when used with high-resolution computer monitors.
- **A POWERFUL SCRIPTING LANGUAGE** is an essential part of overall instrument design. It is used to model instrument behavior, implement sonic features not possible to achieve otherwise, and define user interaction. Opus features a brand new, powerful script language called OpusScript developed by Wolfgang Schneider, the creator of Kontakt. It empowers sound designers to express their ideas, and deploy actual functionality and behavior beyond what the underlying software contains.
- **CUSTOM KEYSWITCHES** allows users to build their own keyswitch instruments, and the ability to create multi-articulation instruments with a variety of options to switch between articulations on the fly. Trigger Options include Keyswitches, Continuous Controllers (CCs), Velocity, Program Changes, and more.
- **ADVANCED AUTOMATION** options come pre-configured on a per-instrument basis, with custom settings tailored to that instrument or library's unique features. Users are also free to configure their own automation settings by adding automation parameters and macro parameters, the latter of which controls multiple targets with a single macro. Existing MIDI Controller Mapping assignments can also be remapped to any freely available MIDI CC assignment you like.
- **MULTI-INSTRUMENT SETUPS** are easier than ever to manage thanks to a dedicated area of the user interface that handles these 'Performances'. Use an array of controls and options that allow you to customize how multiple instrument interact with each other, including defining octaves, key ranges, trigger actions, and more.

OUR INNOVATIVE ORCHESTRATOR SCORING ENGINE

Create full-scale orchestral music with complex arrangements by playing a few simple chords with one hand and shaping expression with the other. Developed in collaboration with Sonuscore, Hollywood Orchestrator used all the instruments in Hollywood Orchestra Opus Edition to create real-time arrangements based on your MIDI input with our innovative Scoring Engine.

EASTWEST SOUNDS VIDEO: [HOLLYWOOD ORCHESTRATOR SCORING ENGINE](#)



With over 500 presets that can be customized, you can instantly create music in the style of Hollywood's greatest composers. Select from Ensemble presets to quickly create rich orchestral arrangements. With Ostinato presets, you can build rhythmic tension in different meters or create moving melodic lines by only changing a few notes. With Score, classic Hollywood orchestrations become an endless source of inspiration. Create your own User presets by modifying existing presets or build your own ensembles from scratch!

At the heart of Hollywood Orchestrator is our innovative Scoring Engine, which can produce results ranging from a basic string arrangement, to very complex orchestrations played by the full orchestra. It achieves this in a two-step process by first modify-

ing the MIDI input with a Note Selection process, then sending those note selections to a powerful Step Sequencer where chords are played with the programmed rhythms. If you want to take things a step further, you can optionally activate our step sequencers. Each slot has one of them. They take whatever the note selection process outputs, and manipulates that. If you program a rhythmic pattern into the sequencers and play a C-Major chord, the sequencers will take the notes from the note selection and play the chord with that rhythm.

In the Mixer section, refine the final output of each instrument by adjusting the volume, pan, equalization, reverb preset, reverb send amounts, and other reverb controls like pre-delay, length, and filters.



HOW TO INSTALL COMPOSER CLOUD +

To begin, download the EastWest Installation Center, through which you will be able to download the Software, Libraries, and activate your License.

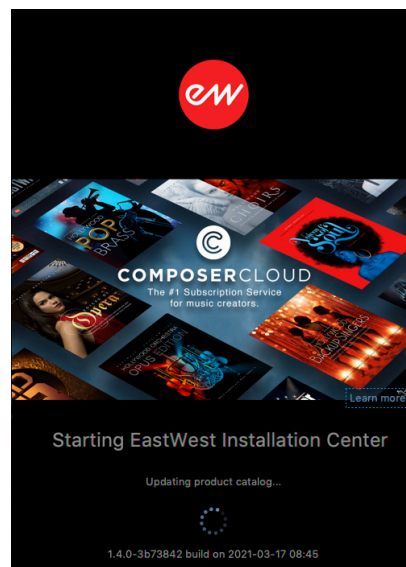
STEP 1: DOWNLOAD AND INSTALL THE INSTALLATION CENTER

The Installation Center can be downloaded from the 'Software & Product Updates' section of the [EastWest Support Center](#). After downloading and installing the package, the Installation Center will open automatically. It is installed here:

- MacOS: MacHD/Applications/East West/
EW Installation Center
- Windows: C:\Program Files\East West\
EW Installation Center

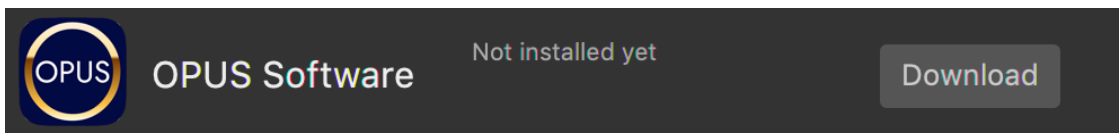
When the Installation Center opens, enter the EastWest account name and password created during registration and allow a moment while it gathers data from your account.

If the Installation Center is already installed, log in and download the latest version by clicking the 'Download' button on the update panel located near the top the Installation Center. The installer will launch automatically, allowing you to proceed through the prompts to update your software.

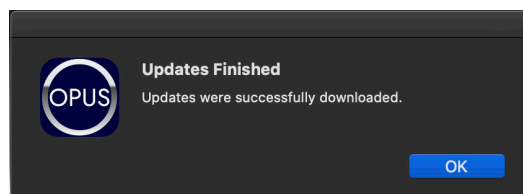
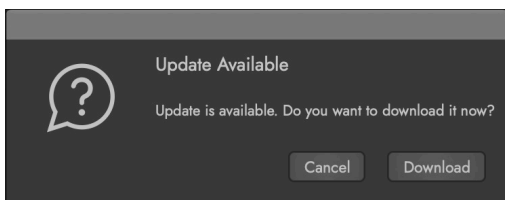


STEP 2: DOWNLOAD AND INSTALL THE OPUS SOFTWARE

Click the 'Download' buttons in the Opus Software panel that appears near the top of the Installation Center. Once the download is complete, the installer will launch automatically. Proceed through the dialog prompts to install Opus, the virtual instrument software that powers EastWest Libraries.



Once Opus is installed, it will automatically check for updates each time its opened. If an 'Update Available' prompt appears upon launching Opus, click the 'Download' button (shown below) to install it, then click 'OK' when the update is finished installing.

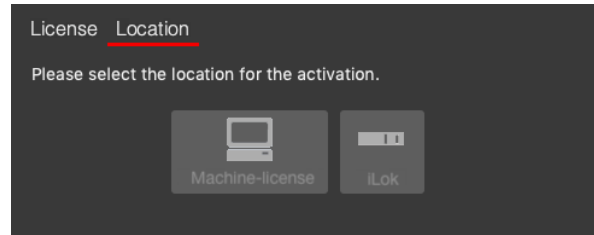
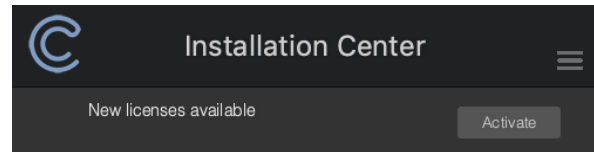


STEP 3: ACTIVATE THE COMPOSERCLOUD+ LICENSE

Click the “Activate” button near the top of the Installation Center to open the Activation Assistant window, which will lead you through the activation process. Click ‘Next’ to proceed past the Introduction tab, then select the Composer-Cloud

license in the License tab and click ‘Next’.

The Location window will give you the option to activate your license on your computer (called a machine-based license) or to a registered iLok security key. Make sure your iLok security key is plugged in if that’s your preferred option.

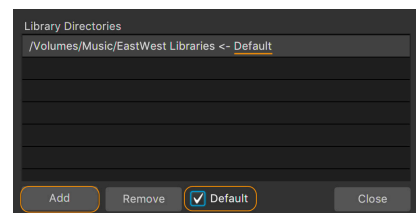
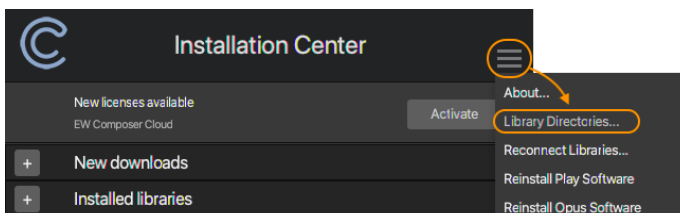


iLOK USERS: If you have an iLok account but you have not connected it to your EastWest account, an Activation Assistant will help link the two accounts. This only needs to be done once. Only iLok 2 and 3 keys are compatible (iLok 1 keys are not compatible).

STEP 4: SET THE LIBRARY INSTALLATION PATH

Create a folder on your computer using the Finder (MacOS) or File Explorer (Windows) called ‘EastWest Libraries’ (or something similar) that will serve as the Library Directory where libraries are downloaded to.

In the EW Installation Center, click the Main Menu and choose ‘Library Directories’. Next, click the ‘Add’ button and add in the location of the folder you just created. Then make the location the default location to download libraries to by clicking the ‘Default’ check-box at the bottom of the options window (it will show a ‘< - Default’ next to it).



PLEASE NOTE: Umlauts (ä, ö, ü), diacritics (ó, ò, ï, ô, õ, õ etc.) and any non-roman characters can result in the file path not being properly read. This can result in an error after the installation, when the library is in use. Please remove these umlauts and diacritics from your file path!

WINDOWS USERS: If you are on Windows, we recommend putting that folder close to your drive name to avoid errors related to file path length being too long. For example, we recommend something like this: F:\EastWest Libraries.

STEP 5: DOWNLOAD INSTRUMENTS OR ENTIRE LIBRARIES

To get started right away, see the “How to Download Instruments” section below for instructions on how to download instruments individually in Opus, without the need to wait for an entire library to finish.

To download an entire library, see the “How to Download Libraries” section in this guide for instructions on using the Installation Center to download libraries.

PLEASE NOTE: Opus is able to determine whether a product has been fully installed in its entirety via the Installation Center, or partially installed by downloading individual instruments in Opus. For more information, see the ‘Partially Downloaded Libraries’ section in the following pages.

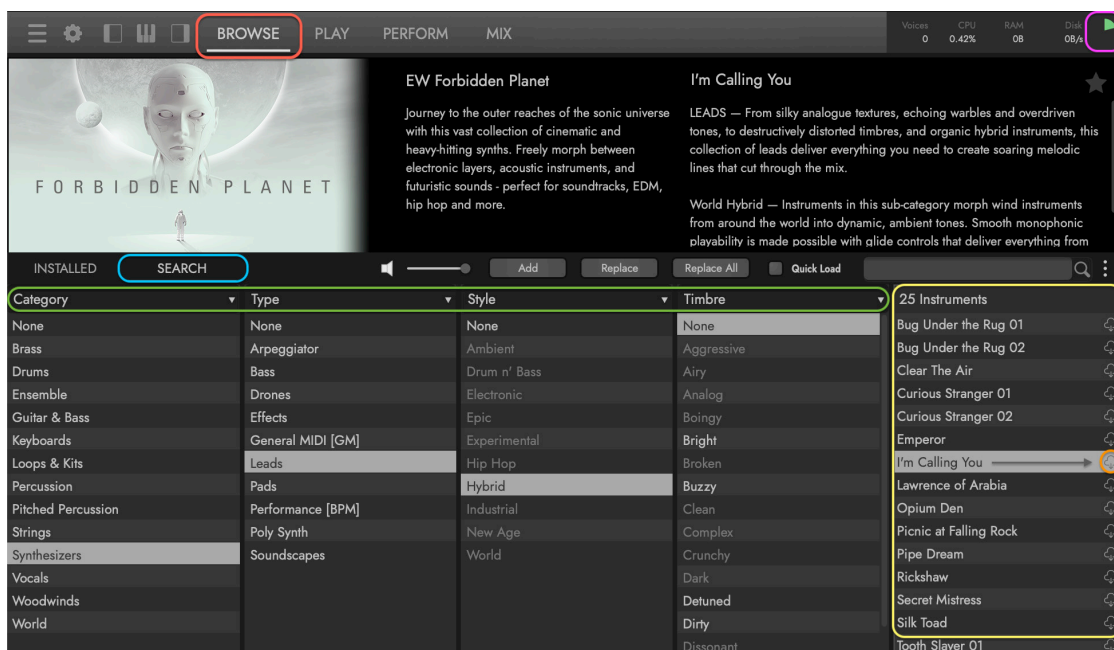
DOWNLOADING INSTRUMENTS

Individual instruments within EastWest Libraries are available on-demand by direct download. There is no need to wait for an entire library to finish downloading before playing your first note, and you can even begin to play an instrument before it's finished downloading.

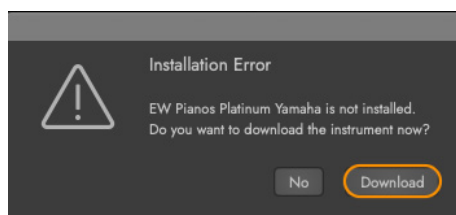
ON-DEMAND DOWNLOADS

Click on the **BROWSE PAGE SELECTOR**, then click on the **SEARCH MODE BUTTON** and select the desired tags that populate the **ATTRIBUTE TAG COLUMNS**.

For example, click on the 'Synthesizers' tag in the Category column, the 'Leads' tag under Type, and the 'Hybrid' tag in the Style column to populate the **RESULTS LIST COLUMN** on the right with instruments that meet the chosen criteria, and are available for download.

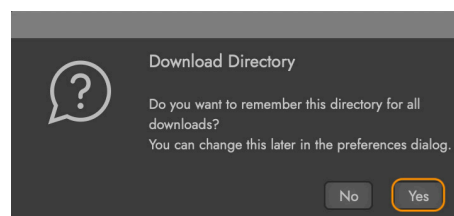


Click on the **ON-DEMAND DOWNLOAD BUTTON** that appears to the right of each instrument in the list to download the instrument, or simply double-click on it.



Now a dialog box will ask if you wish to remember this location for future downloads. In most cases, the answer is 'Yes'.

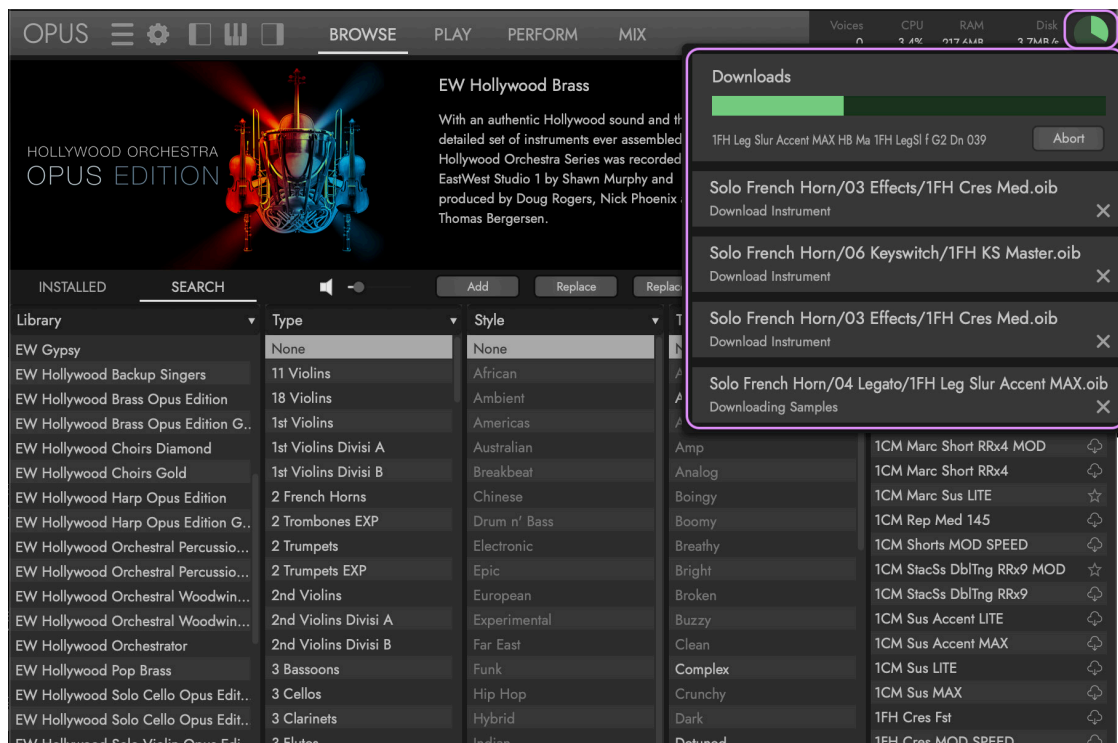
Click 'download' in the dialog window that opens, and if a directory path has not been created, use the 'locate directory for downloads' window to navigate to the location you wish to store the downloads, and click 'Open'.



DOWNLOADS IN PROGRESS

Opus will begin downloading the instruments and samples into the ‘On Demand Download Directory’ set above. You can track the download progress in the top-right corner of the Opus user interface, where the **DOWNLOAD PROGRESS INDICATOR** will fill in the circle with green when the download has completed. You can immediately begin playing the instrument as it’s being downloaded.

When downloading multiple instruments, click on the ‘Progress Indicator’ to open up the **DOWNLOAD PROGRESS WINDOW**, where all instruments that are currently being downloaded will appear. Here, you can use the ‘Abort’ command to stop all downloads, or use the ‘X’ icon next to the individual instruments to stop them from downloading.



AUTOMATIC DOWNLOADS

Opus will automatically download instruments that are missing from a previously saved DAW project file. This can be helpful when drives are unavailable or removed, or when you’re working in collaborations with other Opus users.

This feature is also helpful when loading presets for the Orchestrator scoring engine, which are available for both the Hollywood Orchestra and Hollywood Fantasy Orchestra collections. Orchestrator presets are made up of instruments from a number of different individual libraries within each collection, so if any are missing they will be automatically downloaded.

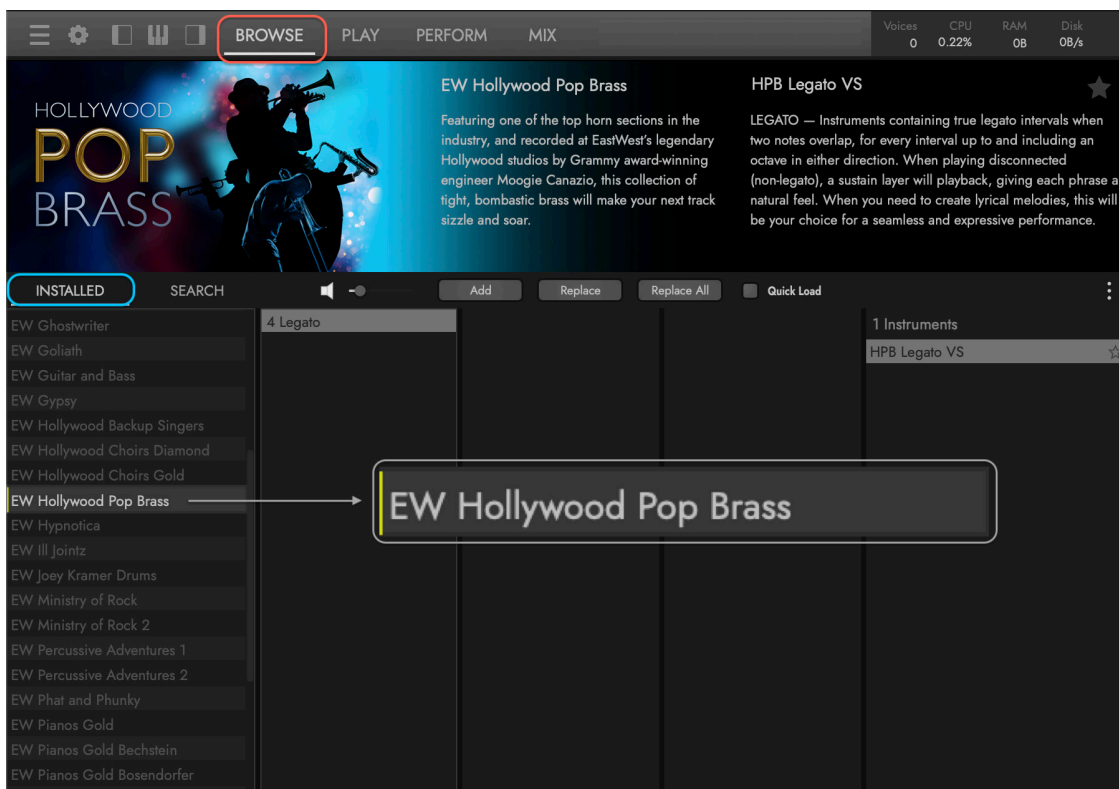
PLEASE NOTE: This feature requires a perpetual license for the product(s) in question, or an active ComposerCloud subscription.

PARTIAL DOWNLOADS

Instruments are released by EastWest as apart of larger collections, called libraries.

When downloading individual instrument(s) in Opus, the product they originate from will appear in the **INSTALLED MODE** of the **BROWSE PAGE** with a yellow **PARTIAL DOWNLOAD INDICATOR** to the left of the product name, indicating it is a partially downloaded library.

When an entire library has been downloaded in the [Installation Center](#), the library appears in white text, indicating the entire library has been downloaded. When a library is fully installed, but the drive its installed to is not connected, the entry appears in gray.



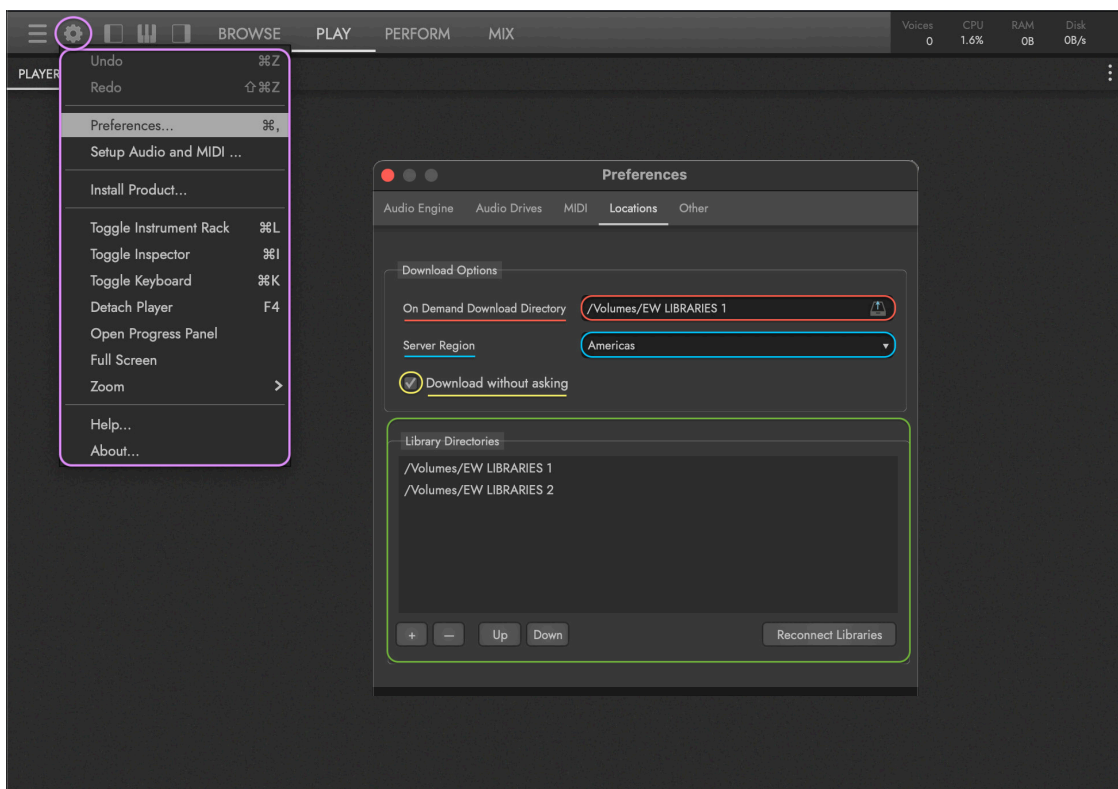
Opus works in a seamless fashion with products whose entire library has been fully downloaded, with libraries whose individual instrument(s) have been downloaded (partial download), or a combination of both.

For example, if a library has been fully downloaded from the Installation Center, but the drive they're installed to is left behind, individual instruments from that library can be downloaded while working remotely.

When the drive containing the fully installed libraries is reconnected again, the full libraries becomes available. Likewise, when disconnecting that drive, the individually installed instruments become available.

DOWNLOAD PREFERENCES

To change the 'On-Demand Download Directory' at anytime, click on the **SETTINGS MENU BUTTON**, then click 'Preferences'. In the Preferences window that appears, click on the 'Locations' tab to show all the Preferences available for on-demand downloads.



To set the location you wish to download instruments to, click in the **ON DEMAND DOWNLOAD DIRECTORY** field to open a search window. Once open, navigate to the desired location, then click 'Open'.

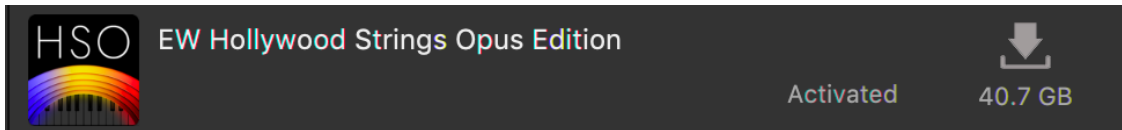
To choose the server region closest to you, click in the **SERVER REGION OPTIONS** and select between Americas, Europe, or Asia Pacific areas.

If you wish to automatically download instruments without a dialog window popping up to confirm, check the **DOWNLOAD WITHOUT ASKING BOX**.

The **LIBRARY DIRECTORIES AREA** populates with the directory paths where installed libraries are located. In the example above, libraries are split between 2 drives. Use the +/- buttons to add (+) a new directory path, or remove (-) an existing one, and change the order using the 'Up' and 'Down' buttons. Use the 'Reconnect Libraries' option to scans the locations(s) set in the Library Directories area, re-establishing the directory path for all installed libraries.

DOWNLOADING LIBRARIES

In the Installation Center's 'New Downloads' section, click the download arrow next to any library to install it into the directory set in 'Step 4: Set the Installation Path' of the 'How to Install ComposerCloud+' section above.



PLEASE NOTE: The amount of drive space required to install an EastWest Library from the Installation Center is just over double the actual size of the library. If you are working with a limited amount of drive space, start with the largest libraries as they will require the most free space to install. If you want to change the installation path to a drive that has adequate space, add a new 'Default' location by following the instructions in Step 4 above.

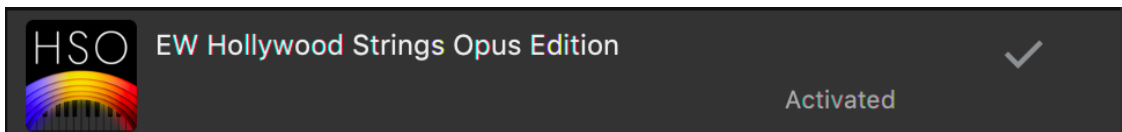
THE DOWNLOAD PROCESS

The download process will now begin, with a blue bar displaying its progress. Click the "X" button to pause the download process, and click "Resume" to continue the download where it was left off.

The Installation Center will cycle through 100% twice. Once for the initial download of the files, and a second time for the unpacking and installation of the library.

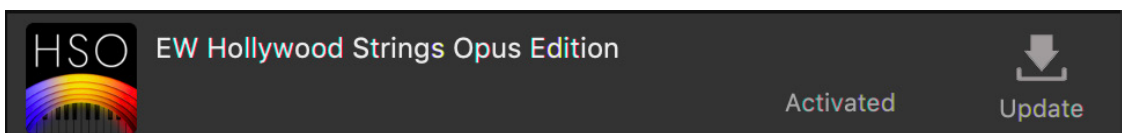
ACTIVATED AND READY FOR USE

When a product is installed and ready to use, a check-mark is displayed.



UPDATING EASTWEST LIBRARIES

If an instrument and/or sample update becomes available for an EastWest Library, it will appear in the Installation Center with the downward arrow icon above the word 'Update'. Simply click the 'Update' icon to download and install the latest update.



CONTINUE READING | **INSTALLATION CENTER GETTING STARTED GUIDE** by clicking [here](#) to read more about all the options and features in the Installation Center.

REQUIRED DRIVE SPACE

The amount of drive space required to install an EastWest Library from the Installation Center is just over double the actual size of the library. The installation process includes downloading compressed files, unpacking them into a main library folder, and finally deleting the left-over compressed files.

If a drive does not have sufficient space, an installation directory with enough space to download and unpack the library can be added in the Main Menu / Library Directories area of the Installation Center. Check the 'Default' box if you wish to download libraries here in the future.

Once installed, an EastWest Library can be moved or copied to another drive, and in the same way described in the above paragraph, can be added to the Library Directories.

LIBRARY SIZE TABLE

The table below contains the current lineup of EastWest Libraries included in the ComposerCloud+ plan, and the amount of drive space required to store them rounded to the nearest gigabyte.

PLEASE NOTE: MacOS and Windows operating systems calculate file size based on their respective drive formatting. As a result, these numbers represent an approximation.

COMPOSER CLOUD +	MAC	WIN
TOTAL (GB)	2,344	2,160
EW Hollywood Orchestra Opus Edition	944	874
EW Hollywood Orchestra Strings	[377]	[350]
EW Hollywood Orchestra Brass	[201]	[187]
EW Hollywood Orchestra Woodwinds	[195]	[177]
EW Hollywood Orchestra Percussion	[75]	[70]
EW Hollywood Orchestra Harp	[16]	[15]
EW Hollywood Orchestra Solo Cello	[41]	[38]
EW Hollywood Orchestra Solo Violin	[39]	[37]
EW Hollywood Fantasy Orchestra	138	138
EW Hollywood Fantasy Strings	[62]	[62]
EW Hollywood Fantasy Brass	[19]	[19]
EW Hollywood Fantasy Woodwinds	[12]	[12]
EW Hollywood Fantasy Percussion	[10]	[10]
EW Hollywood Fantasy Voices	[38]	[38]
EW Pianos	283	263
EW Pianos Bechstein	[79]	[73]

continued...]

EW Pianos Bosendorfer	[93]	[86]
EW Pianos Steinway	[62]	[58]
EW Pianos Yamaha	[49]	[46]
EW Symphonic Orchestra	124	124
EW Symphonic Orchestra Strings	[51]	[51]
EW Symphonic Orchestra Brass	[37]	[37]
EW Symphonic Orchestra Woodwinds	[25]	[25]
EW Symphonic Orchestra Percussion	[12]	[12]
EW Hollywood Choirs	59	56
EW Symphonic Choirs (+Expansion)	41	40
EW Hollywood Backup Singers	9	8
EW Hollywood Pop Brass	23	21
EW Stormdrum 2 (+Pro Expansion)	18	18
EW Stormdrum 3	84	84
EW Silk	25	25
EW Ra	14	14
EW Gypsy	12	12
EW Voices of Passion	8	8
EW Voices of the Empire	14	13
EW Voices of Soul	13	12
EW Voices of Opera	41	38
EW Solo Violin	5	5
EW Ghostwriter	56	56
EW Goliath	41	41
EW Ministry of Rock 1	20	20
EW Ministry of Rock 2	58	58
EW The Dark Side	38	38
EW String Machine	13	13
EW Forbidden Planet	54	54
EW Fab Four	13	13
EW ProDrummer - Spike Stent	55	55
EW ProDrummer - Joe Chiccarelli	33	33
EW 25TH Anniversary Collection	26	26
EW '56 Strat	[2.2]	[2.2]
EW Adrenaline	[1.4]	[1.4]
EW BT Breakz	[0.7]	[0.7]

continued...]

EW BT Twisted Textures	[1.3]	[1.3]
EW Drum n Bass	[0.8]	[0.8]
EW Electronica	[0.5]	[0.5]
EW Funky Ass Loops	[0.5]	[0.5]
EW Guitar and Bass	[0.5]	[0.5]
EW Hypnotica	[0.6]	[0.6]
EW Ill Jointz	[1.0]	[1.0]
EW Joey Kramer Drums	[2.9]	[2.9]
EW Percussive Adventures 1	[1.4]	[1.4]
EW Percussive Adventures 2	[3.0]	[3.0]
EW Phat n Phunky	[0.8]	[0.8]
EW Public Enemy	[1.1]	[1.1]
EW Scoring Tools	[0.4]	[0.4]
EW Smoov Grooves	[0.7]	[0.7]
EW Steve Stevens Guitar	[0.5]	[0.5]
EW Stormdrum 1 Loops	[3.5]	[3.5]
EW Stormdrum 1 MultiSamples	[2.6]	[2.6]
EW Symphonic Adventures	[0.6]	[0.6]

UPGRADING TO COMPOSERCLOUD+

ComposerCloud+ is available as an annual paid monthly, prepaid, month-to-month and educational plans. It includes all main EastWest releases as well as the Spaces II Convolution Reverb.

Those coming from ComposerCloud and ComposerCloud X subscriptions (which are no longer offered) only need to update products released in multiple editions (Gold, GoldX, and Platinum/Diamond). Products that were common to all ComposerCloud plans do not have to be reinstalled.

PLEASE NOTE: Projects saved with Gold or Gold X edition libraries will need to be reloaded with the Platinum / Diamond Libraries. When the project begins loading, press 'Abort' when asked to locate the samples, then re-save the project once you have loaded the equivalent Platinum and Diamond instruments. Unfortunately, there is no way to avoid this, because the sample content is a higher bit-depth.

VISIT OUR SUPPORT CENTER

Visit the [EastWest Support Center](#) to talk to a Support Rep through our Live Chat service, get software and product updates, access FAQs, manuals, guides, and more!

LIVE CHAT WITH A SUPPORT REP

EastWest's Support Center offers Live Chat, the fastest way to reach a Support Team Member to help resolve any technical issues you may be having.

Click on the red “Chat Now” box that appears in the lower-right corner. Fill in your name and email address, then click “Start the Chat”, or if an agent is not available click “Leave a Message” by explaining your issue, and a Support Agent will respond as soon as they’re available.

VIDEO TUTORIALS AND MORE

Visit us on YouTube for video walkthroughs, tutorials, and trailers, and join the discussion and get the latest announcements on Facebook.

- [EastWest Sounds on YouTube](#)
- [EastWest Sounds on Facebook](#)

MANUALS AND GUIDES

The latest manuals for each product are available in the [EastWest Support Center](#), and many are accessible directly inside the Opus Software itself.

- **Library User Manuals** are accessible by clicking on the **USER MANUAL BUTTON** located in the top-right corner of the Description Box, found in the Browse page.

- **Opus Software Manual** is accessible by clicking on the **SETTINGS MENU BUTTON** and in the Navigation Bar, and selecting the **HELP OPTION** at the bottom of the menu. It provides a comprehensive dive into all the features and controls available in Opus.

